

State of BMP's Address

Looking at what is New and Improved in SWPPP Control Measures in 2024



StormwaterONE
Training & Credentialing

About Us

StormwaterONE is a private occupational trade school registered in Rocky Hill, Connecticut



StormwaterONE
Training & Credentialing

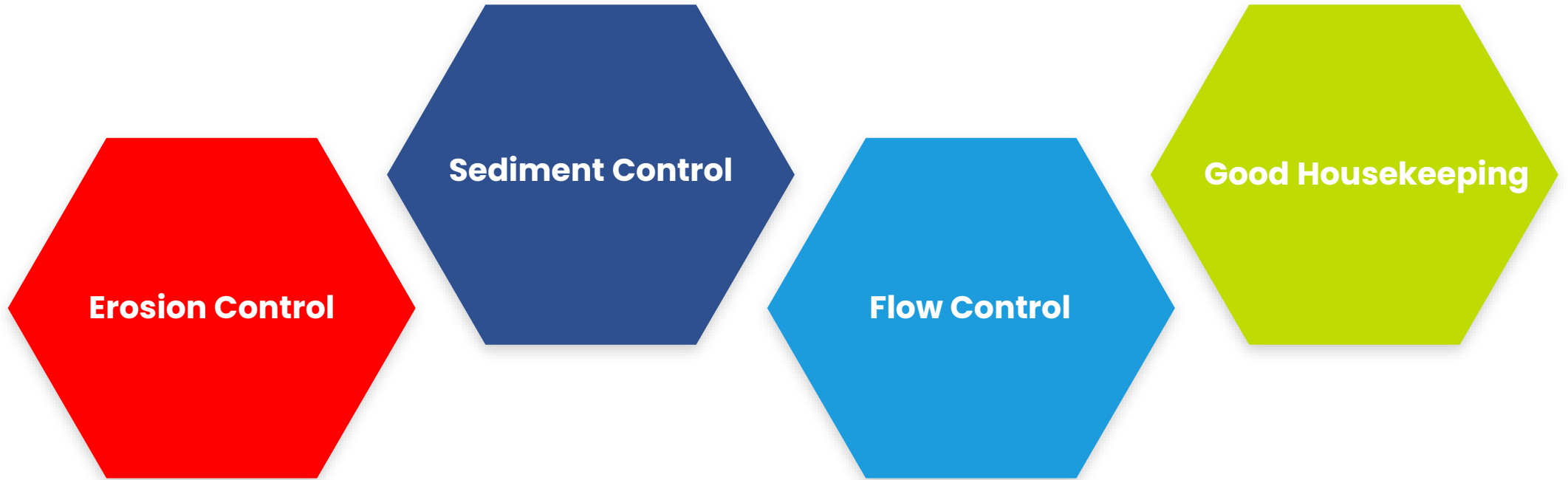




Updates to the 2023-2028 TCEQ CGP

- Construction Support Activities must be within 1 mile of the permitted site
- On-site sanitary facilities must be anchored
- SWPPP's may be kept electronically
- No longer necessary to print out the CGP
- Waters of the US clarified, including wetlands
- Inspections for multi-day Rainfall events of 0.5" clarified
- Inspection reports need deadlines for BMP actions
- Dewatering inspection requirement added

The 4 SWPPP Perspectives



Erosion Control

**Erosion
Control**



**Erosion
Control**



**Erosion
Control**



**Erosion
Control**



**Erosion
Control**



**Erosion
Control**



**Erosion
Control**



**Erosion
Control**



**Erosion
Control**



**Erosion
Control**



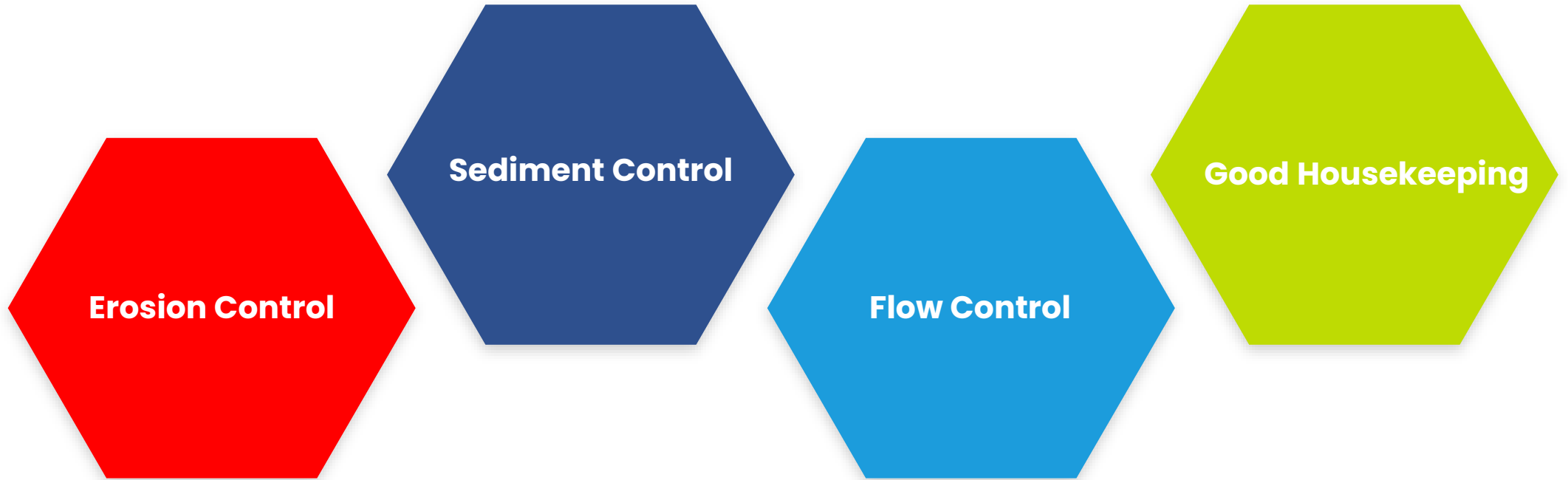
**Erosion
Control**



**Erosion
Control**



The 4 SWPPP Perspectives

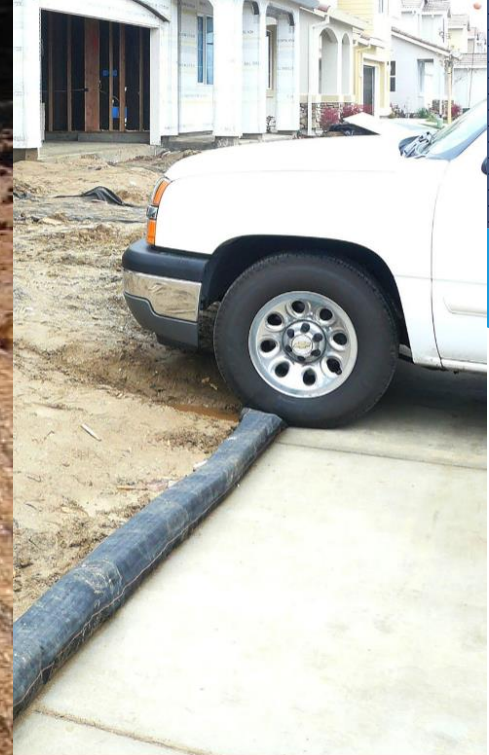


Sediment Control

Sediment Control



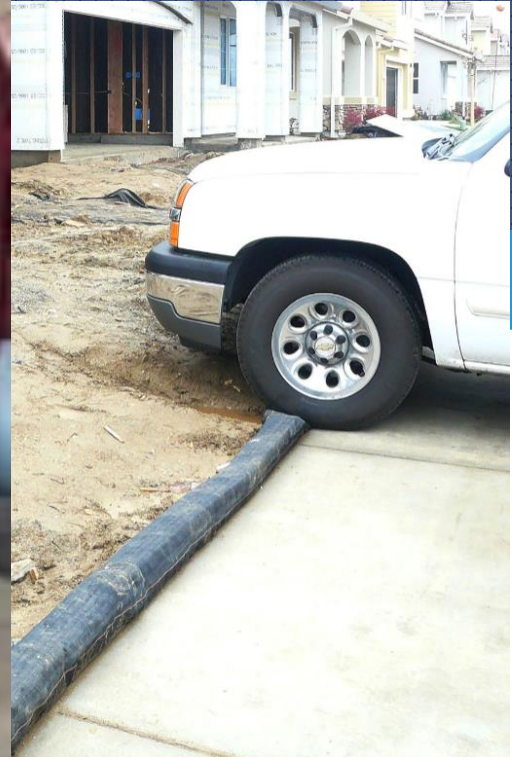
Sediment Control



Sediment Control



**Sediment
Control**



Sediment Control



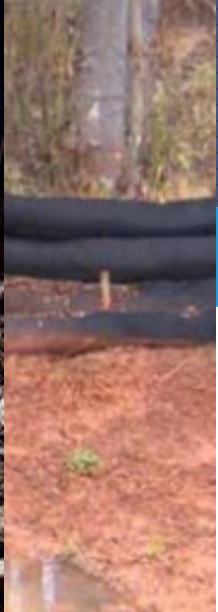
**Sediment
Control**



Sediment Control



Sediment Control



Sediment Control



Sediment Control



Sediment Control



Sediment Control



Sediment Control



**Sediment
Control**



Sediment Control



**Sediment
Control**



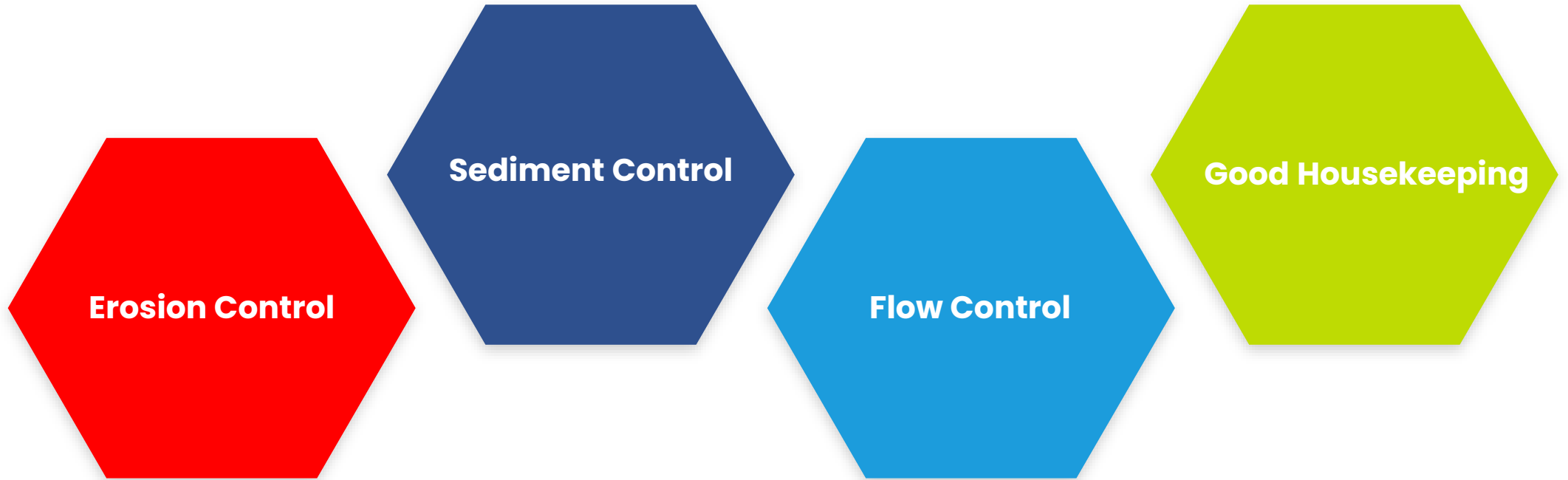
Sediment Control



**Sediment
Control**



The 4 SWPPP Perspectives

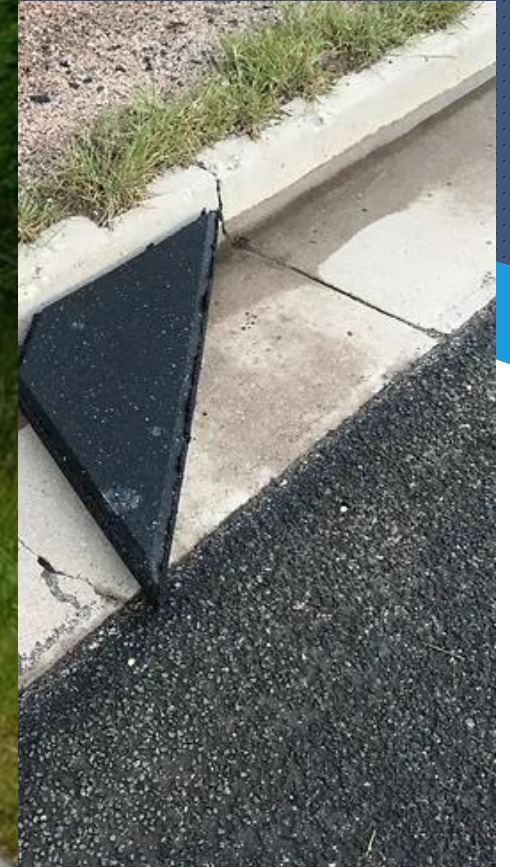


Flow Control

Flow
Control



Flow
Control



Flow
Control



Flow Control



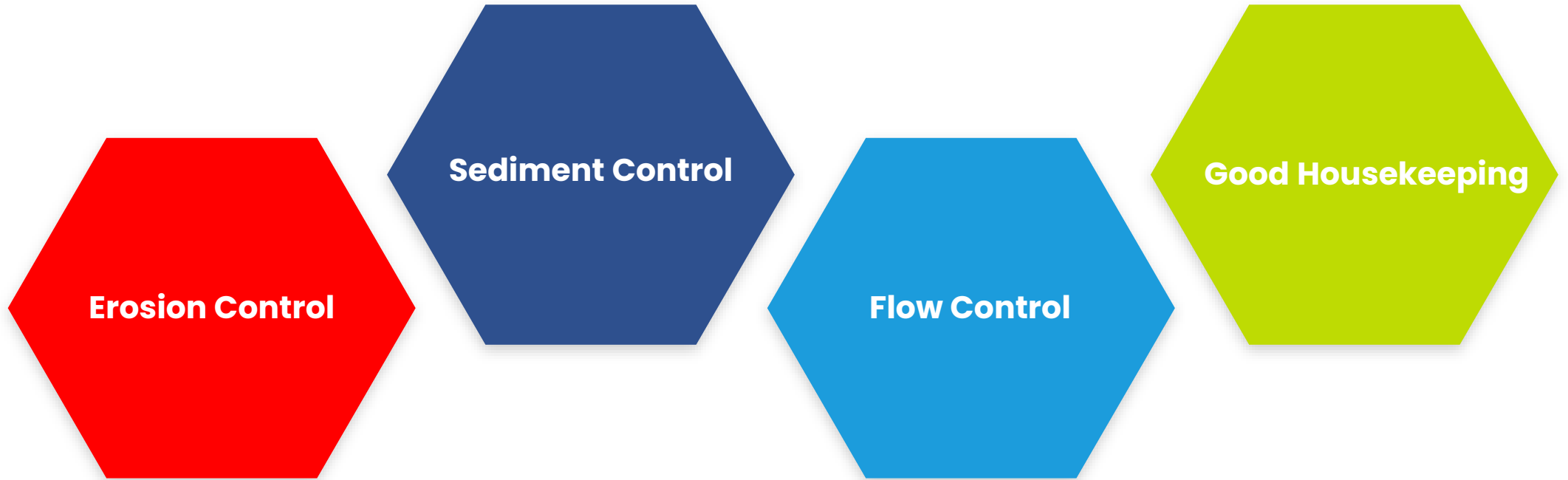
Flow
Control



**Flow
Control**



The 4 SWPPP Perspectives



Good Housekeeping

Good House Keeping



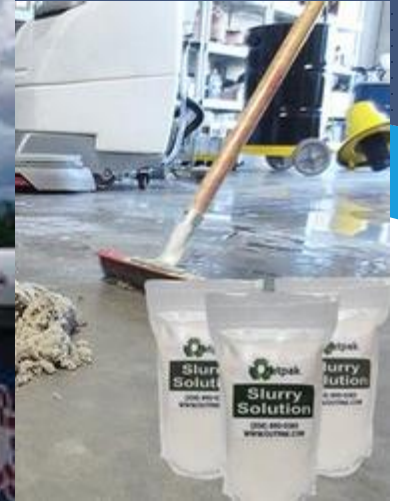
Good
House
Keeping



Good House Keeping



Good House Keeping



Good House Keeping



Good House Keeping



Good
House
Keeping



Good
House
Keeping



Good House Keeping



Good House Keeping



Good House Keeping



Good
House
Keeping





State of BMP's Address

Looking at what is New and Improved in SWPPP Control Measures in 2024



StormwaterONE
Training & Credentialing